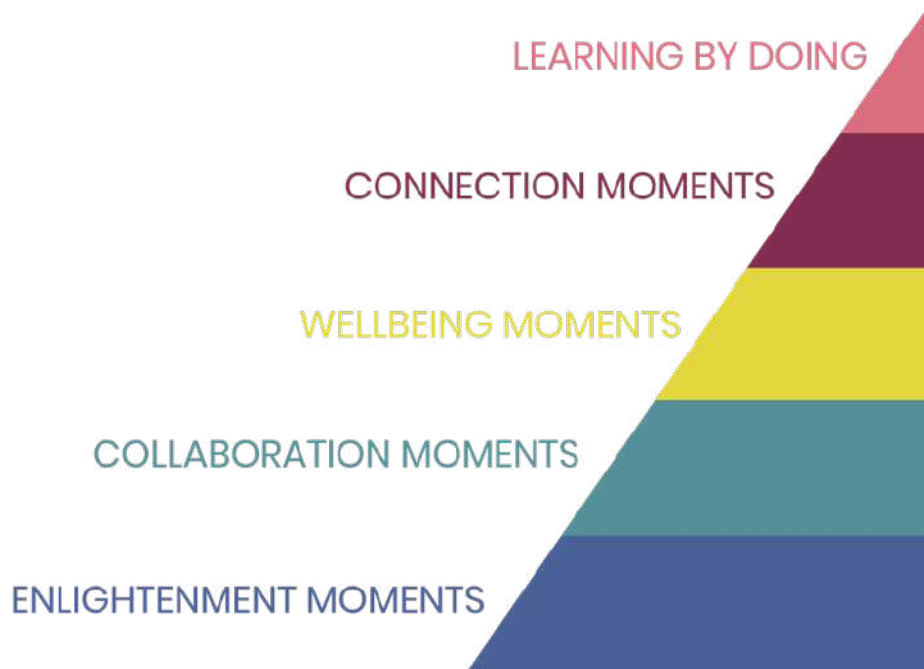


NGU MOMENTS CONCEPT
(LEARNING PYRAMID)



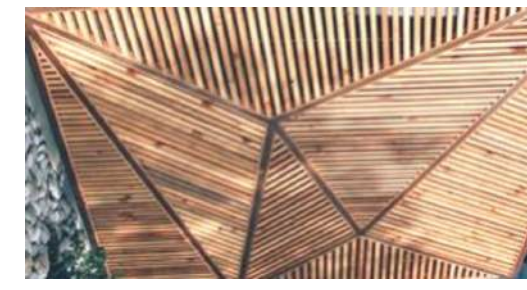
CONCEPT

Creating an Environment that provides effective integration of the curriculum, social and business aspects, Improves students' learning and collaboration experiences, and supports them in developing their business ideas.



NGU Logo

PHYSICAL FEATURES



GRAPHICAL FEATURES



PROJECT DETAILS

Multidisciplinary private university founded in 2016

LOCATION

Giza Plateau, Cairo, Egypt

YEAR

2019

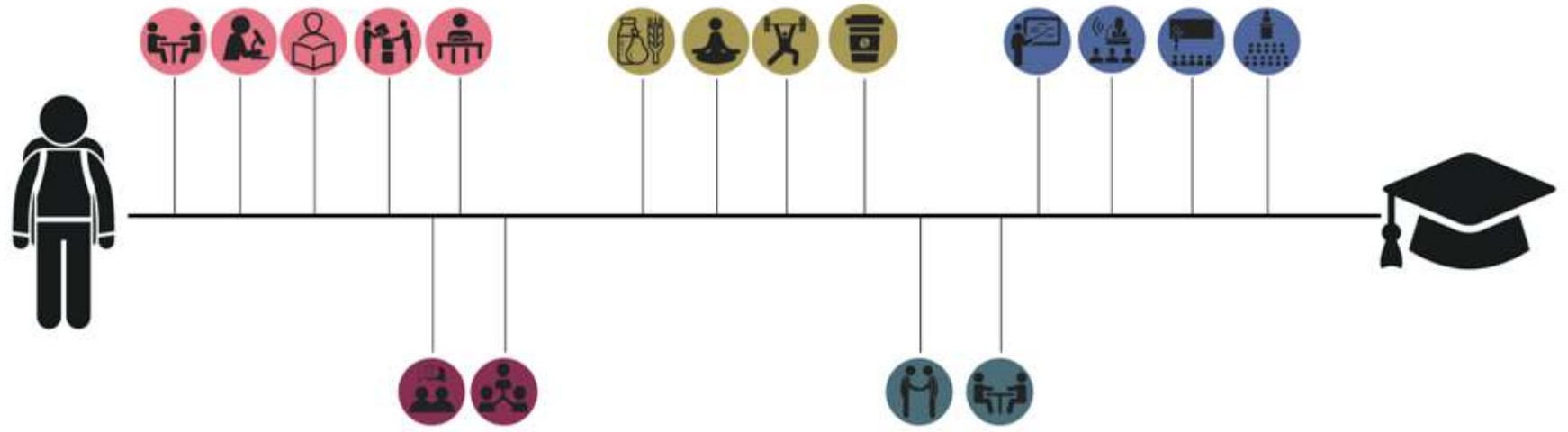
STATUS

Conceptual - Master's Project

SCOPE OF WORK

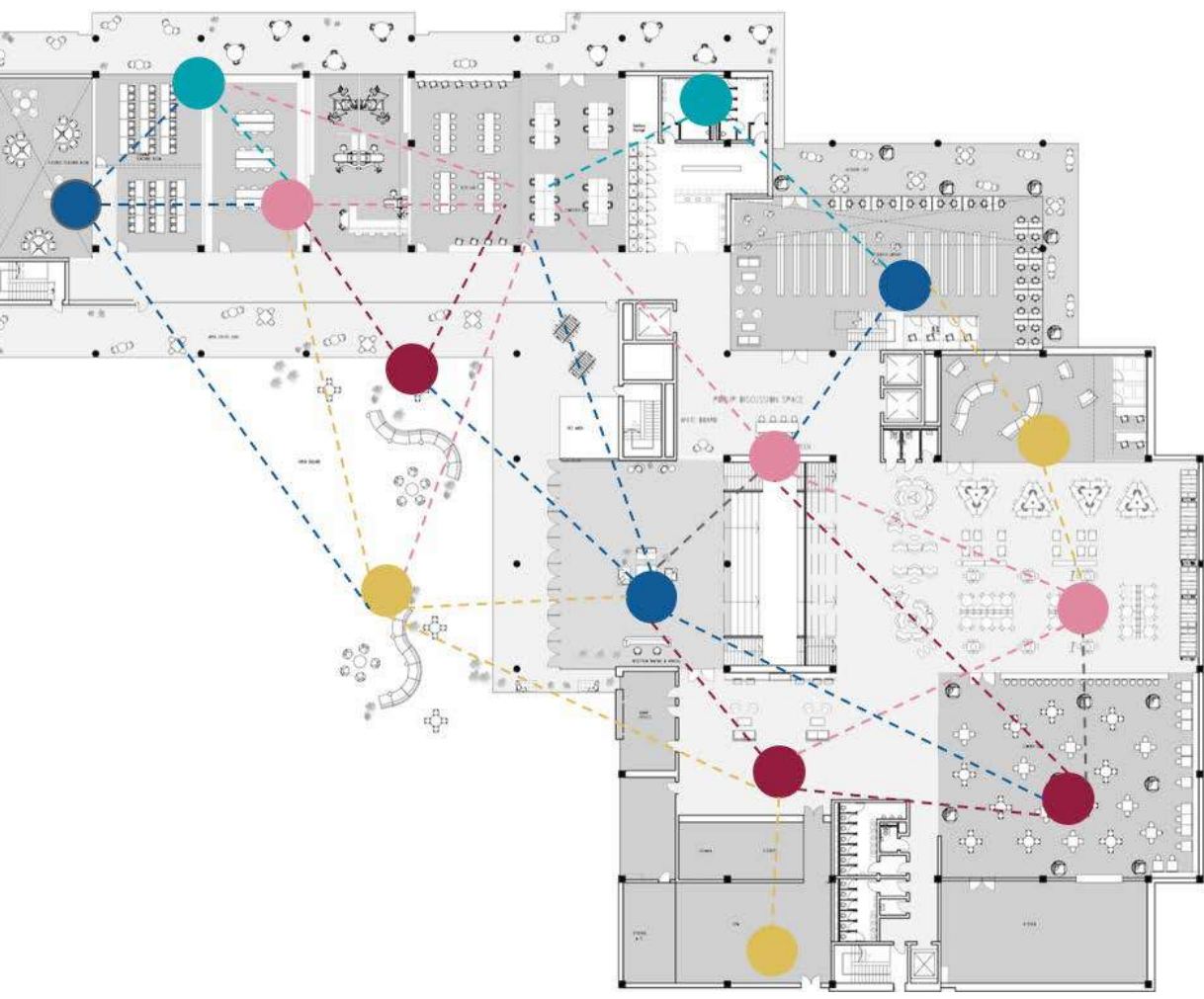
Space Planning
Design Concept
Branding
3D visuals generation

NGU MOMENTS



NGU ACTIVITIES DICTIONARY

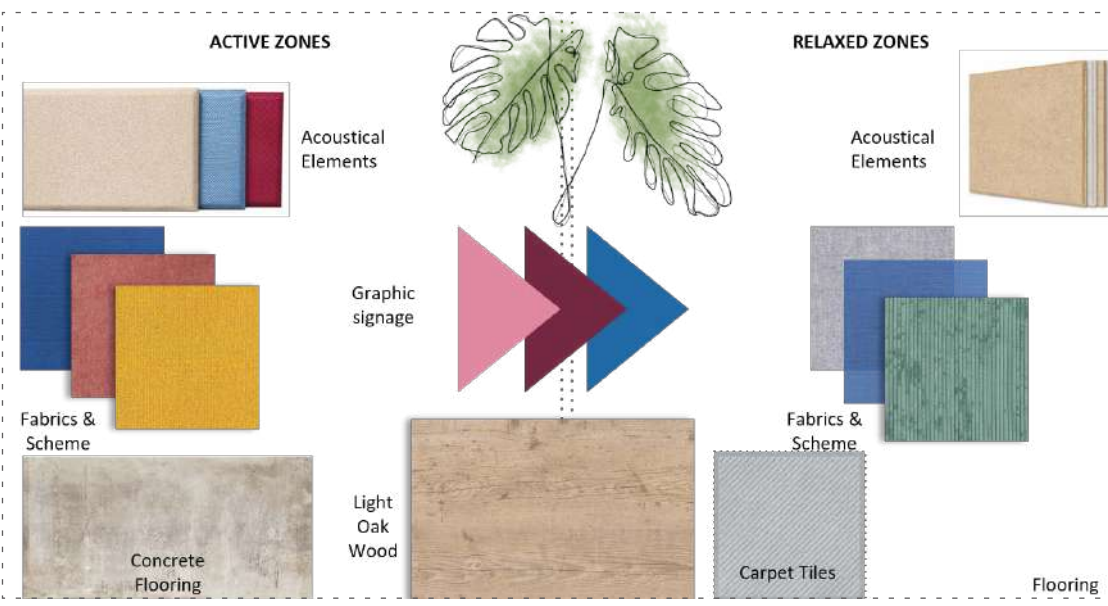
- Let's Make
- Let's Learn
- Let's Discuss
- Collaborate
- Focus time
- NGU Connects
- Co-Learning
- Lets meet
- Lets connect
- Take a break
- Coffee Time
- Stay healthy
- Me Time
- Presenter time
- Lecture space
- Faculty spotlight



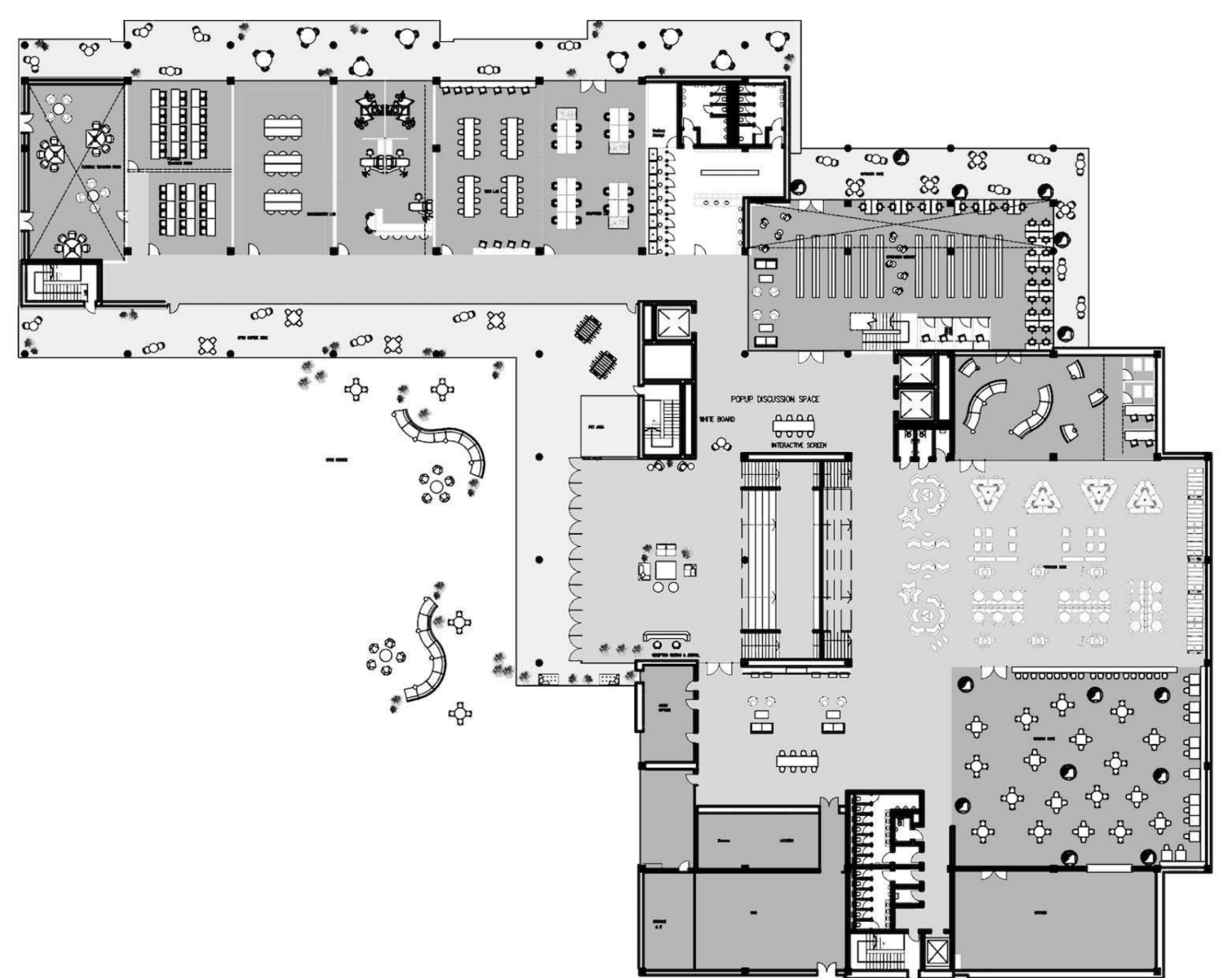
WAYFINDING CONCEPT



MATERIALS BOARD



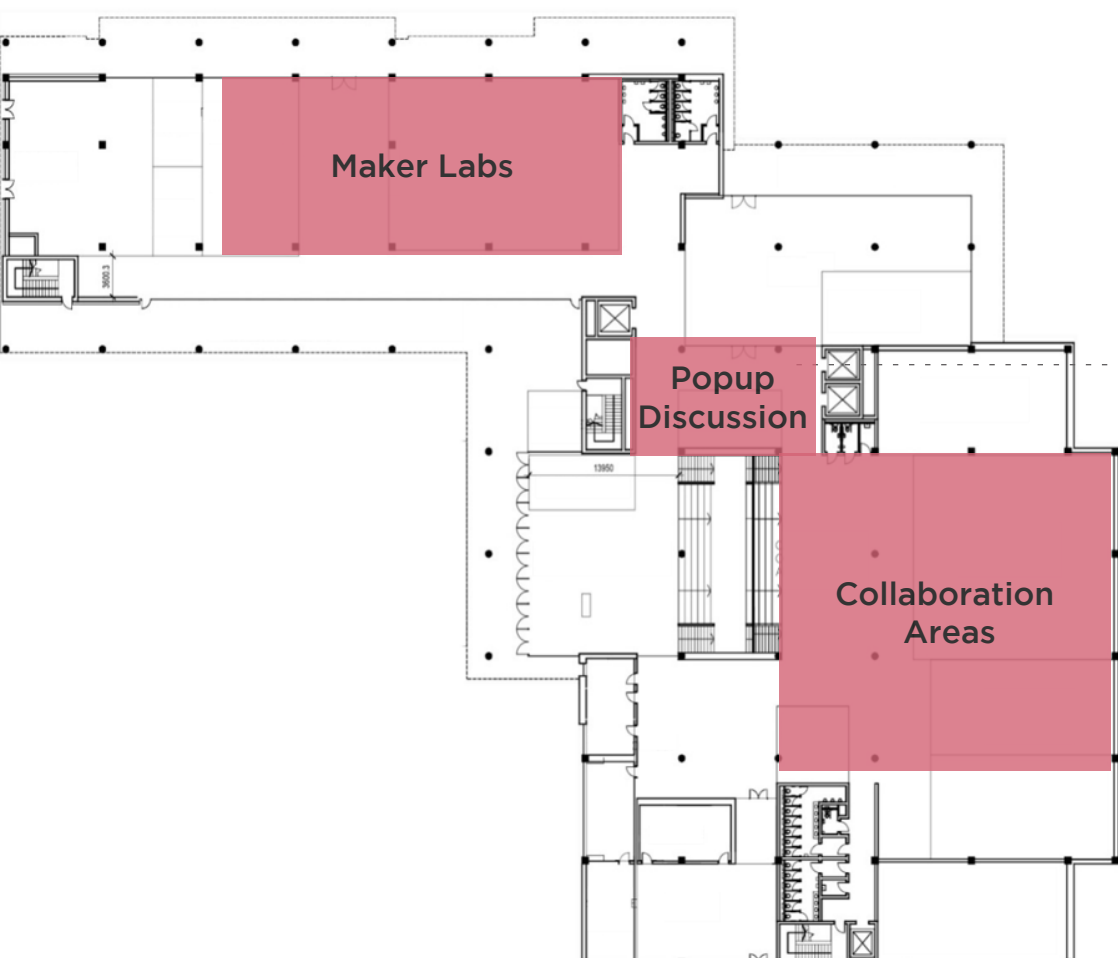
FURNITURE LAYOUT



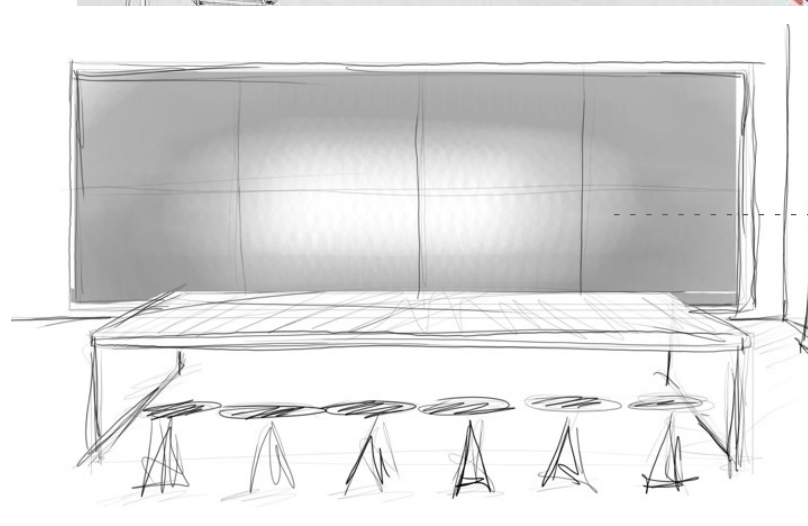
LEARNING BY DOING



What: Practical areas that allow students to learn actively by doing
How: Offering students different areas and seating options
Why: Getting hands on projects is an important way for students to learn



- Acoustical Wool Ceiling
- Light Oak Wood
- Fabrics for Furniture
- Concrete Flooring

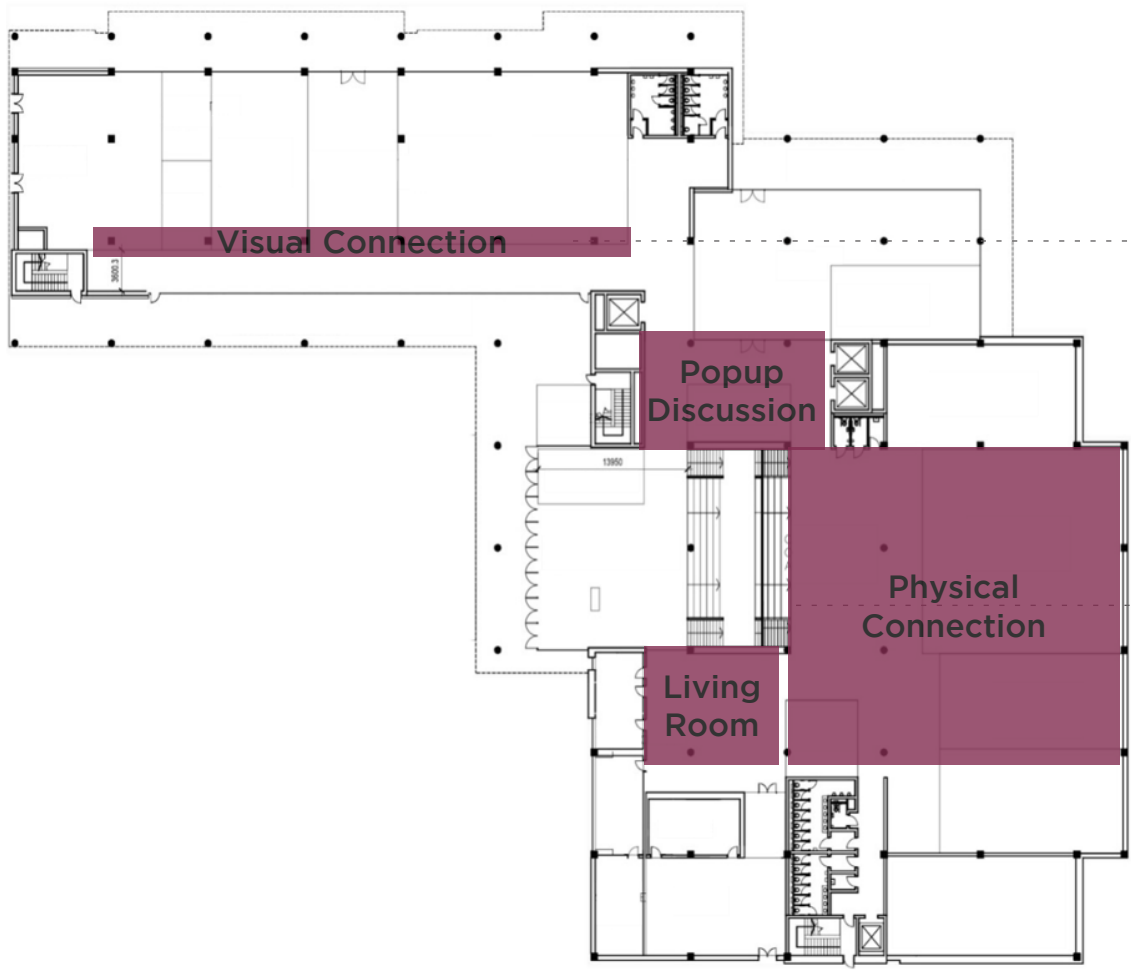


Interactive Screen/Blackboard

CONNECTION MOMENTS



What: Transparent areas to create a visible connection in the university. Open and relax areas for students to meet and mingle.
How: Creating intelligent glass between classrooms that allow physical and visual connections for students to interact.
Why: Is important to develop curiosity in students to be informed and interested in all university activities.



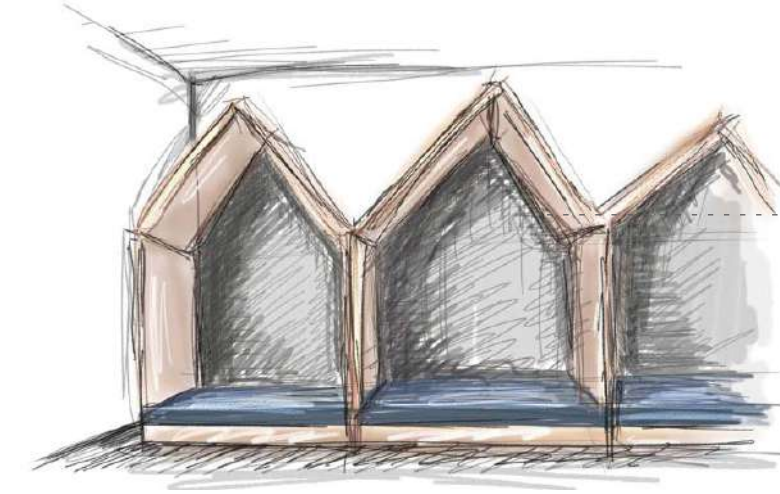
- Acoustical Wool Ceiling
- Graphic for Directional signage
- Light Oak Wood - Classroom Door
- Board for Motivational Signage
- Concrete Flooring

Open collaboration area under the staircase creating a visual connection between students

WELLBEING MOMENTS

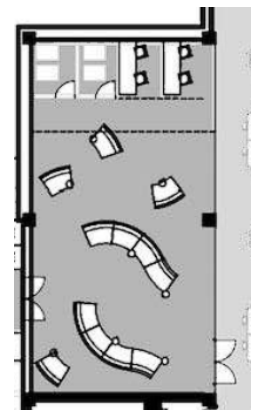


What: Areas that foster wellbeing by providing areas to refresh, energize, & de-stress.
How: Maximize the comfort and freedom in the space
Why: To create a sense of belonging, inspire students to come up with new ideas



Focus / Relaxation Shelter

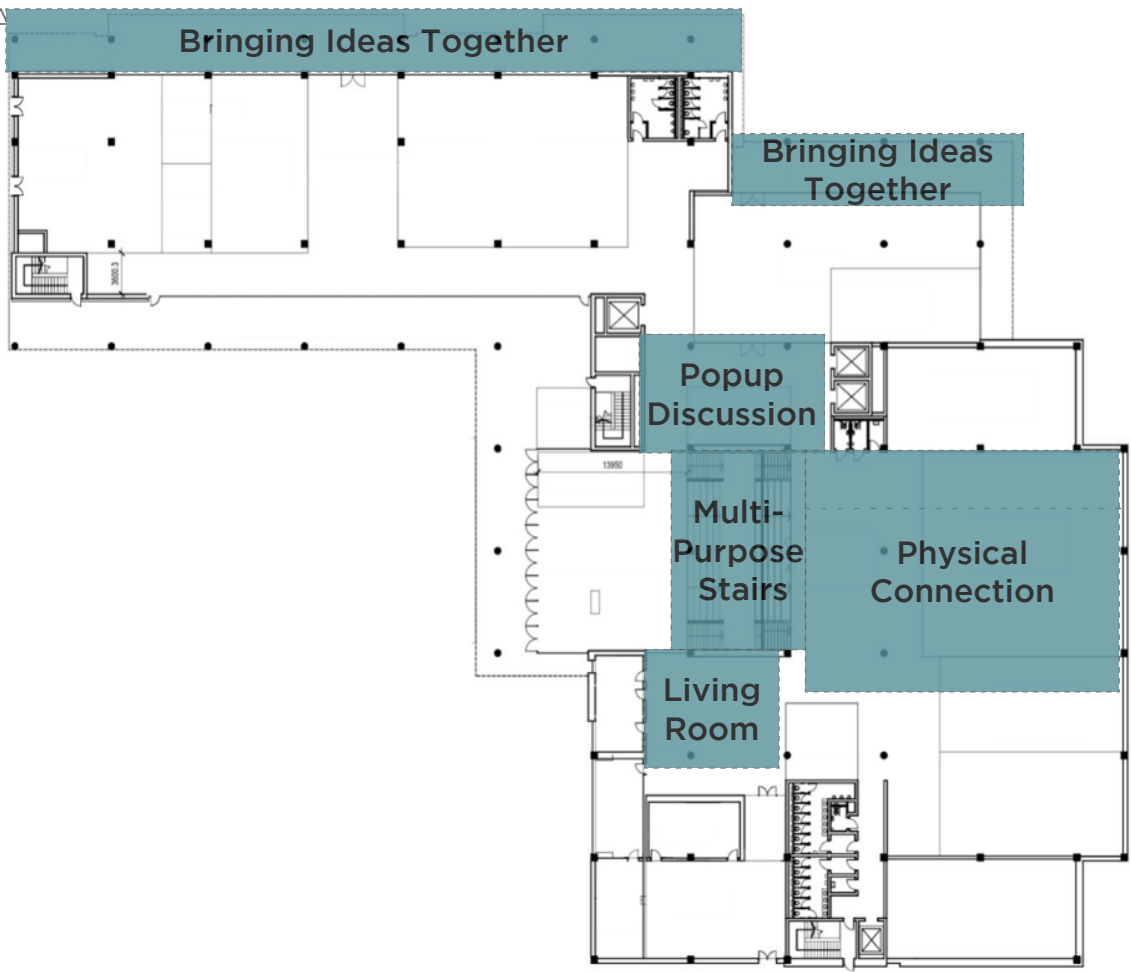
- Light Oak Wood - Frames & Furniture
- Acoustical Wall Panels
- Carpet Tile
- Soft Fabrics for Modular Furniture



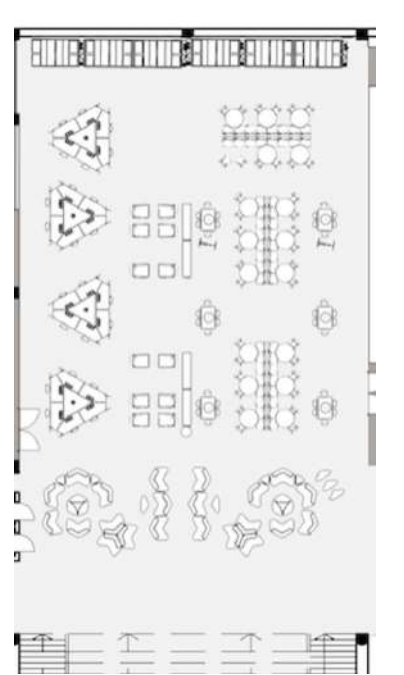
COLLABORATION MOMENTS



What: Provide areas that allow collaboration, Cafes, Stairs, Living room, and others
How: By providing the tools for students and academics to work together and combine their ideas & knowledge.
Why: Because combining efforts makes the outcome better. Sharing knowledge makes ideas richer and allow Kaleidoscope Thinking.



- Freestanding Shelves/Partitions
- Light Oak Wood - Feature Wall
- Fabrics for Low Seating
- Concrete Flooring



ENLIGHTENMENT MOMENTS



What: Any moment is a learning moment; learning is not only in classrooms
How: The campus is a continuous learning experience. All senses are indulged in different spaces to maximize the learning moments.
Why: Creating a continuous learning experience in this campus away from the traditional notion of learning

